

Living with Water

Ecosystem Resiliency – Community Sustainability



USS *North Carolina* Battleship

National Historic Landmark
State Historic Site

250,000 Annual Visitors

\$3 million Annual Budget



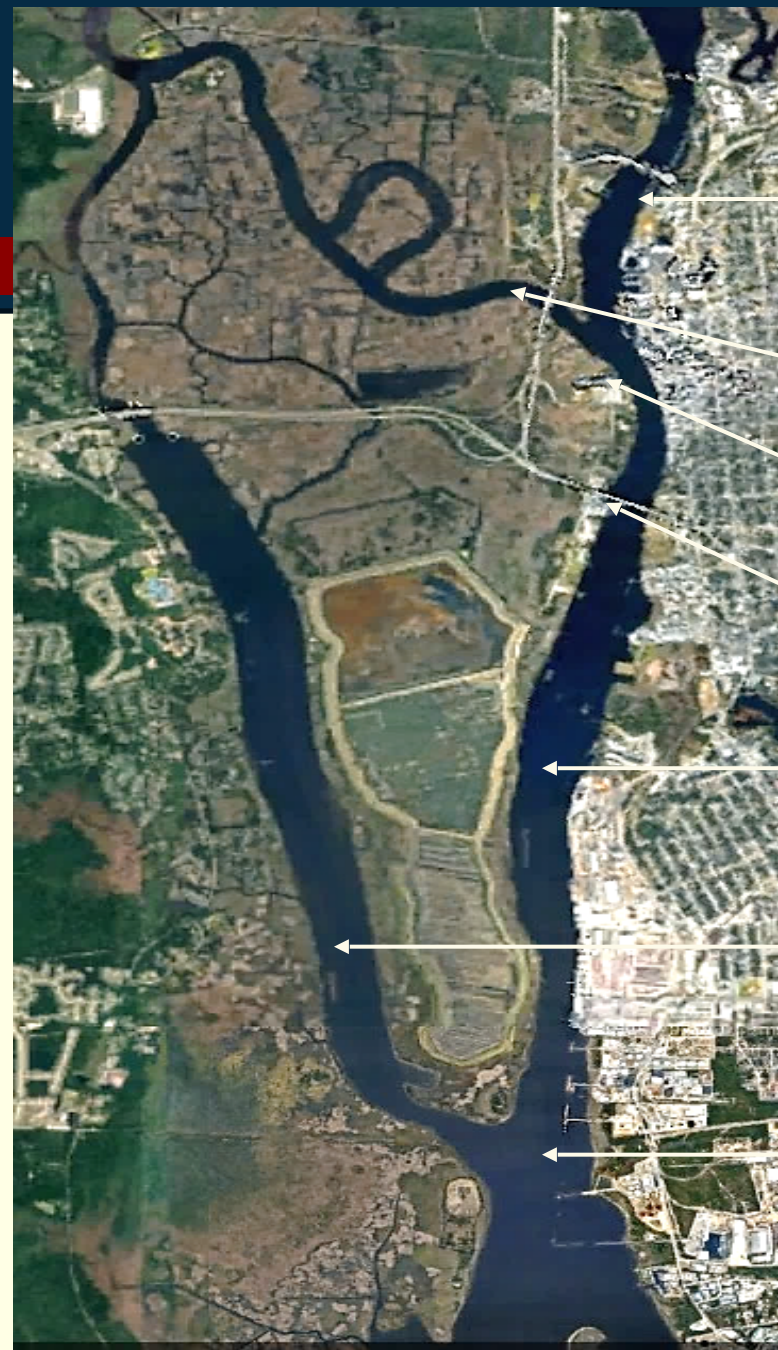


Battleship &
Eagles Island

Cape Fear River

Atlantic Ocean

Bald Head Island



Northeast Cape
Fear River

Cape Fear River

Battleship

NOAA Tidal Gauge

Cape Fear River

Brunswick River

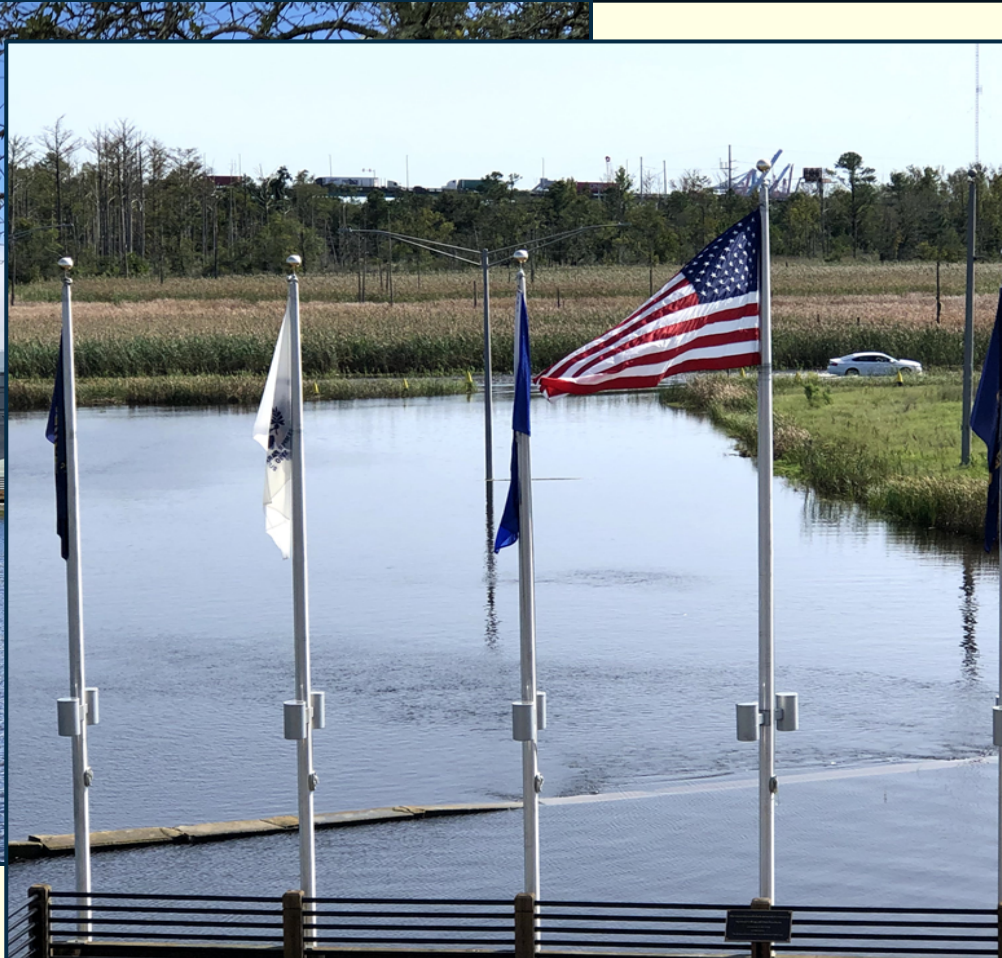
Cape Fear River



Sea Level Rise & Tidal Flooding



Impacts: Battleship Site



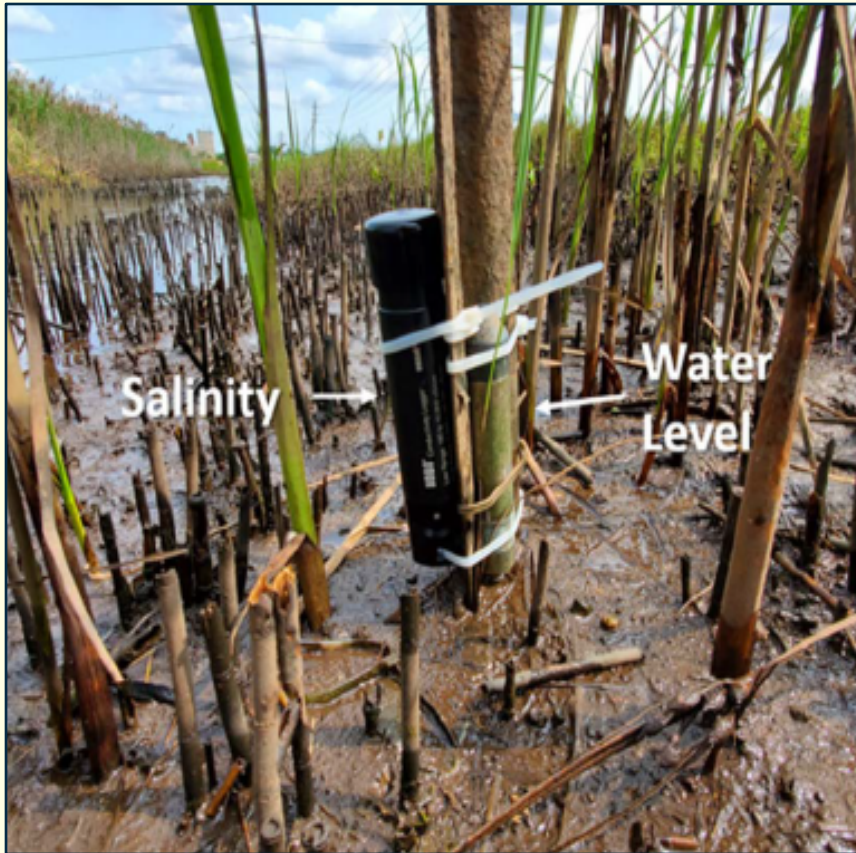
Impacts: Battleship Revenues



Field Investigations



Water Levels & Salinity



Identical Water Level Patterns

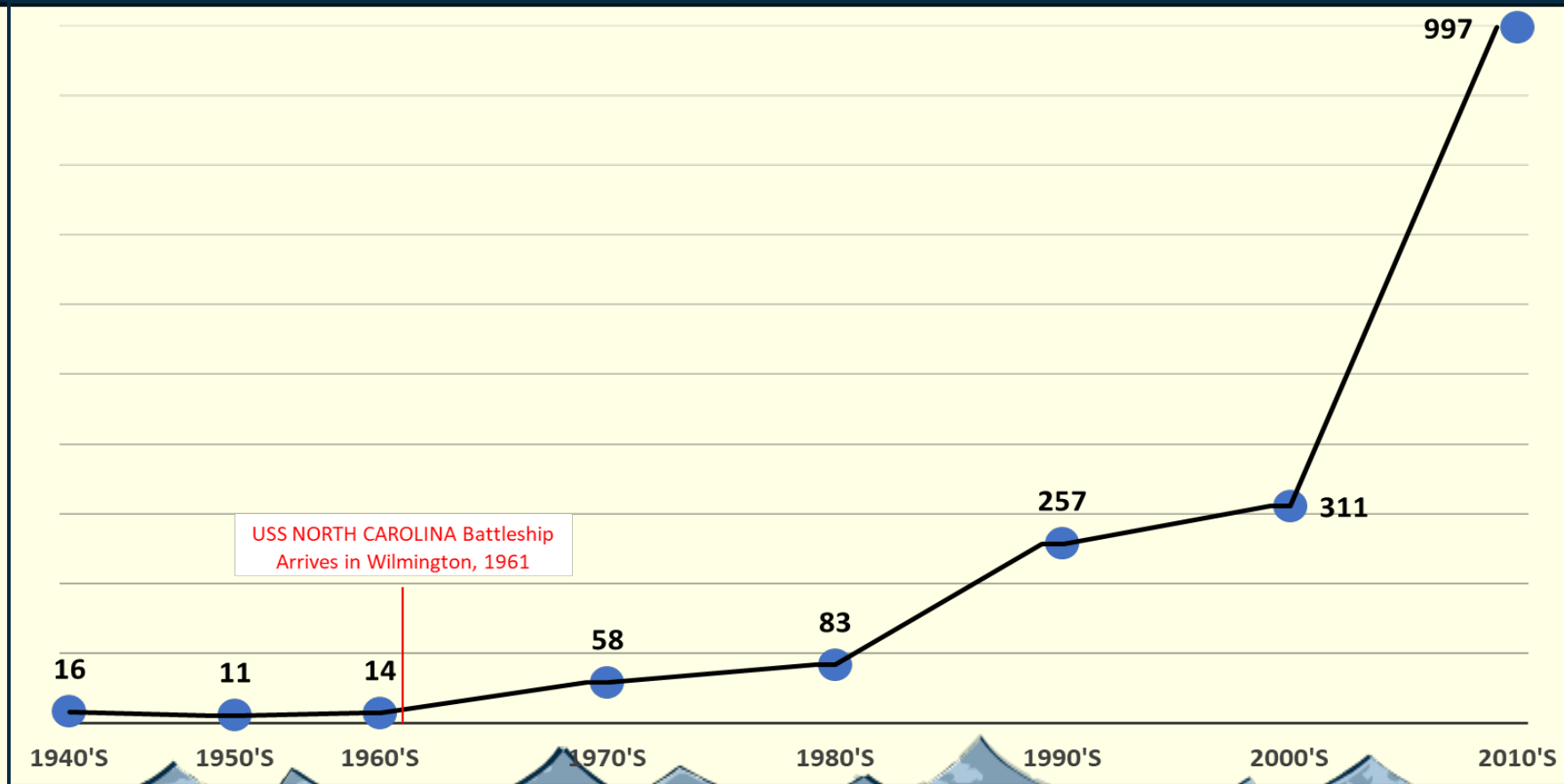


Site Flooding Model

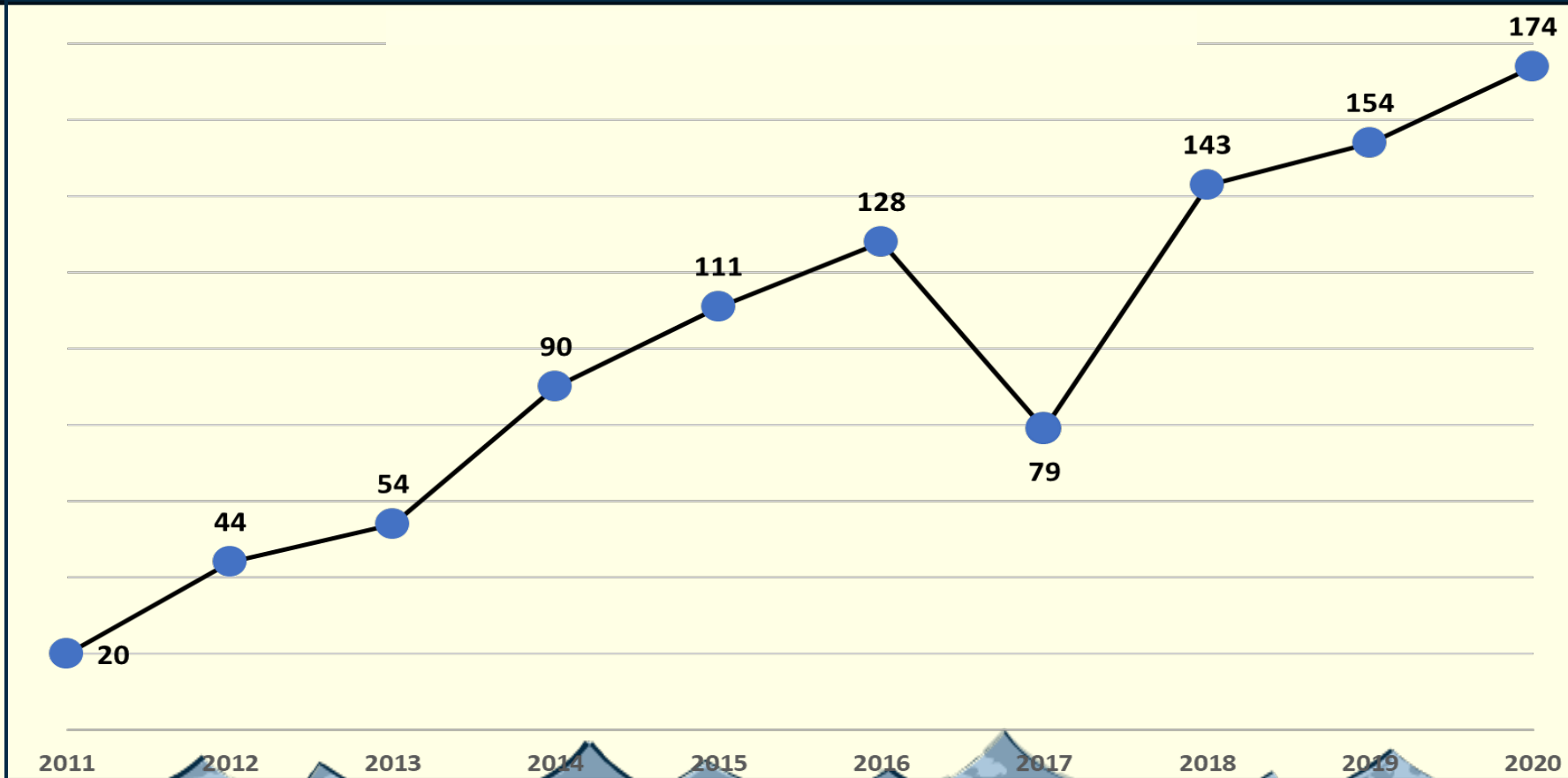


This product is for illustrative purposes only and does not represent a legal survey

7,021% Tidal Flooding Increase Since 1961



770% Tidal Flooding Increase Last Decade



Habitat Restoration & Green Infrastructure



Living with Water Concept Plan



Living Shoreline



Wetland & Parking Lot



Ground Breaking Event – February 9th



Living with
WATER

Construction Begins – February 7th



Living Shoreline Construction



Wetland & Parking Lot



Parking Lot Preparation



Wetland Construction – 3/7/2024



Wetland Construction – 3/26/2024



Wetland Construction – 4/8/2024



Project Monitoring

Biological Monitoring: UNCW's
Coastal & Estuarine Studies Lab
Benthic Ecology Lab
Wetland & Ecology Management
Lab

Physical Monitoring: NOAA's
National Centers for Coastal
Ocean Science, Beaufort Lab



Living with Water Story Map

Interactive Education: battleshipnc.com/projects



Media Attention & Outreach

Recent Media

Washington Post – “Flood-prone historic site decides to live with rising water rather than fight it,” January 1, 2024.

The Assembly - #1 most read story of 2023 (NC political insider).

Reuters News – “Americans move to climate-risky areas as real estate booms,” March 14, 2024.

Planned Outreach

Living Laboratory at the Battleship
in collaboration with UNCW



Living with Water Questions

